



- STREET WORKOUT
- PARKOUR
- TRAMPOLINES

TRAMPOLINE

A person in a blue t-shirt, dark shorts, and a white cap with a red brim is performing a handstand on a blue outdoor gym structure. The person is upside down, with their feet tucked and arms extended downwards, gripping a horizontal bar. The background shows a clear blue sky with some clouds and a brick building in the distance. The overall scene is bright and active.

TAILORED-MADE

EXERCISE AREAS – INDIVIDUAL APPROACH TO EACH PROJECT

We can customize any project to suit your specific needs. Just let us know your tender specifications and location requirements, and we will prepare a complete offer with visualizations.

TABLE OF CONTENTS

ABOUT US	3
SPECIAL MARKINGS, GUARANTEE	4
PARKOUR AND FREERUNNING	5
Ready sets	6
Single obstacles	12
Our solutions	16
SKY RINGS	17
STREET WORKOUT AND NINJA COURSES	19
Ready sets	20
Ninja courses	24
Single stations	27
PLAYGROUND TRAMPOLINES	31
Themed trampolines	32
Single trampolines	34
Trampolines sets	38
Colour options	40
EQUIPMENT FOR OUTDOOR GYMS	41



ABOUT US

1Move is not just a company; it's a vibrant mixture of creativity and passion. Our story began in 2014 when one of our own inspired our founder with a vision. This spark ignited years of collective experience and unwavering trust, culminating in the birth of a new economic entity that continues to evolve to this day.

1Move is more than just a workplace; it's a community of young, passionate individuals driven by a shared enthusiasm for their craft. Our team comprises specialists who possess an innate ability to discern and cater to user needs. Armed with this insight, we design cutting-edge equipment and construct exercise areas that

seamlessly blend functionality and safety.

Our commitment is not limited to conceptualization; it extends to turning dreams into tangible achievements. At **1Move**, we pour our hearts and souls into bringing our innovative ideas to life while helping others realize their fitness dreams.

As we forge ahead, our dedication to innovation and excellence remains unwavering, ensuring that **1Move** continues to be a driving force in the world of fitness and well-being.

Marek Starczewski - Co-Founder
Pawel Bogusz - CEO & Co-Founder

SPECIAL MARKINGS

This catalog has been designed with your convenience in mind. For this reason, we have developed a special marking system for the technical parameters of our products listed in the catalogue. The individual special designations with descriptions are shown below.



Performance standards



Device dimensions



The area of the safe zone



Maximum number of users



Safe area dimensions



Free fall height



Execution standard



Inclusive device

GUARANTEE



We guarantee 10 years for the strength of structural steel parts and stainless steel elements.



5 years for the strength of elements made of HPL boards, corrosion resistance of elements made of stainless steel, hot-dip galvanized steel and powder coated.



3 years for the durability of elements made of plywood, plastic and rubber, powder-coated black steel.

BUILDING THE REALM OF OUTDOOR ACTIVITY

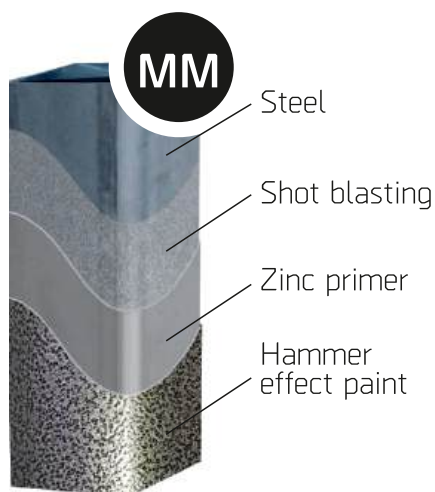
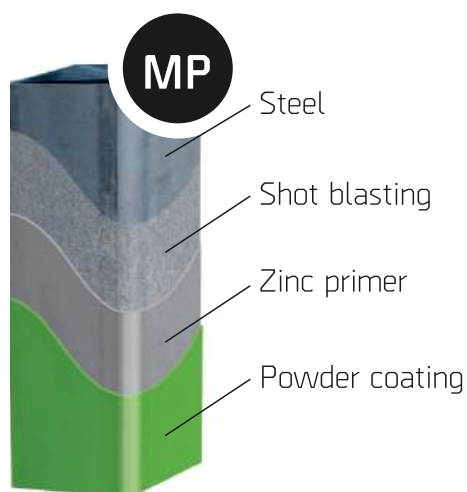




PARKOUR & FREERUNNING

Performance standard: (P), (I), (C), (MM)

- **(MP)** - Powder-coated, zinc primer posts and construction of obstacles, hot-dip galvanized (without painting) bars and exercises elements, wall obstacles made of non-slip and waterproof plywood plates, SBR cylinders
- **(C)** - plates of wall obstacles made of gray, non-slip and waterproof plywood/ solid polycarbonate with street-art graphics
- **(I)** - Inox stainless steel structure, wall obstacles made of non-slip and waterproof plywood/ HPL plates, SBR/HDPM cylinders
- **(MM)** - posts made of premium steel painted with hammer paint



Urban Jungle Parkour Park

1M-P12



- S MP, MM, I, C
- + 18,02 x 23,85 x 3,44 m
- ▨ 466,41 m²
- ⊕ 21,61 x 26,96 m
- HIC 2,4 m
- NORM EN16899/EN1176

Multi Style Parkour Set

1M-P11



- S MP, MM, I, C
- + 17,93 x 8,18 x 3,44 m
- ▨ 217,43 m²
- ⊕ 21,48 x 11,78 m
- HIC 2,4 m
- NORM EN16899/EN1176

Modern Parkour Set

1M-P13

- S MP, MM, I, C
- + 13,27 x 11,45 x 2,5 m
- ▨ 175,82 m²
- ⊞ 16,80 x 14,72 m
- HIC 2,4 m
- NORM EN16899/EN1176



K2 Parkour Set

1M-P10

- S MP, MM, I, C
- + 6,30 x 11,09 x 2,00 m
- ▨ 115,20 m²
- ⊞ 9,70 x 14,43 m
- HIC 2,0 m
- NORM EN16899/EN1176



Cadet Parkour Set

1M-P09



Adept Parkour Set

1M-P08



Runner Parkour Set

1M-P07

- S MP, MM, I, C
- + 1,50 x 17,99 x 2,0 m
- ▨ 96,13 m²
- ⊕ 4,97 x 21,32 m
- HIC 2,0 m
- NORM EN16899/EN1176



Start Plus Parkour Set

1M-P06

- S MP, MM, I, C
- + 5,07 x 5,50 x 2,0 m
- ▨ 63,91 m²
- ⊕ 8,41 x 8,50 m
- HIC 2,0 m
- NORM EN16899/EN1176



Mini Parkour Set

1M-P04



- S MP, MM, I, C
- + 2,35 x 7,45 x 2,0 m
- ▨ 56,39 m²
- ⊕ 5,96 x 10,79 m
- HIC 2,0 m
- NORM EN16899/EN1176

Start Parkour Set

1M-P05



- S MP, MM, I, C
- + 5,07 x 5,50 x 2,0 m
- ▨ 60,24 m²
- ⊕ 8,41 x 8,50 m
- HIC 2,0 m
- NORM EN16899/EN1176

Parkour Plus Wall

1M-P02

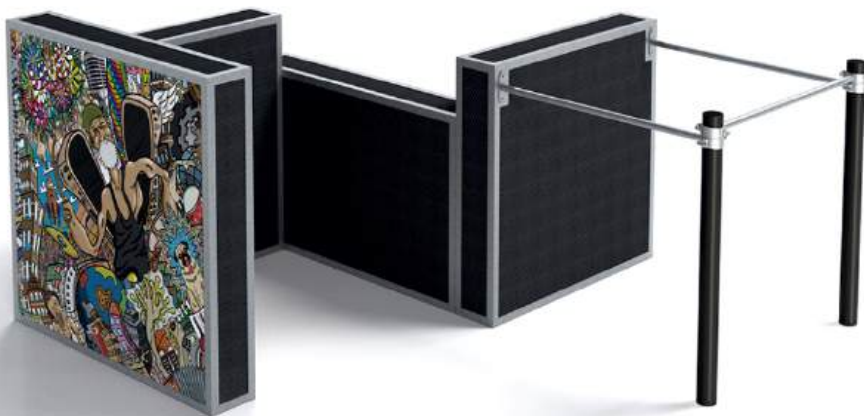
- S** MP, MM, I, C
- +** 1,36 x 3,04 x 1,50 m
- ▨** 22,31 m²
- ⊕** 4,36 x 6,04 m
- HIC** 1,5 m
- NORM** EN16899/EN1176



Small Zigzag Parkour Wall

1M-P03

- S** MP, MM, I, C
- +** 2,88 x 3,04 x 1,50 m
- ▨** 28,70 m²
- ⊕** 5,88 x 6,04 m
- HIC** 1,5 m
- NORM** EN16899/EN1176



Parkour Wall

1M-P01

- S** MP, MM, I, C
- +** 1,30 x 1,75 x 1,50 m
- ▨** 15,8 m²
- ⊕** 4,30 x 4,75 m
- HIC** 1,5 m
- NORM** EN16899/EN1176



Single wall "G"

P-G



S	MP, MM, I, C
+	0,25 x 1,0 x 0,7 m
NORM	EN16899/EN1176

Single wall "F"

P-F



S	MP, MM, I, C
+	0,25 x 1,0 x 1,0 m
NORM	EN16899/EN1176

Single wall "B"

P-B



S	MP, MM, I, C
+	0,25 x 1,3 x 1,3 m
NORM	EN16899/EN1176

Single wall "H"

P-H



S	MP, MM, I, C
+	0,25 x 2,1 x 2,0 m
NORM	EN16899/EN1176

Single wall "D"

P-D



S	MP, MM, I, C
+	0,25 x 2,1 x 1,0 m
NORM	EN16899/EN1176

Single wall "A"

P-A



S	MP, MM, I, C
+	0,25 x 1,5 x 1,0 m
NORM	EN16899/EN1176

Single wall "E"

P-E



S MP, MM, I, C
+ 0,25-0,9 x 1,3 x 2,0 m
NORM EN16899/EN1176

Single wall "C"

P-C



S MP, MM, I, C
+ 0,25 x 1,5 x 1,5 m
NORM EN16899/EN1176

Single wall "L"

P-L



S MP, MM, I, C
+ 0,63 x 1,5 x 2,0 m
NORM EN16899/EN1176

Module M1

P-M1



S MP, MM, I, C
+ 3,24 x 4,12 x 2,5 m
NORM EN16899/EN1176

Module M-2

P-M2



S MP, MM, I, C
+ 6,2 x 1,0 x 3,0 m
NORM EN16899/EN1176

Module M3

P-M3



S MP, MM, I, C
+ 2,0 x 0,3 x 5,6 m
NORM EN16899/EN1176

Module M-4

P-M4



S MP, MM, I, C
+ 3,7 x 2,5 x 0,8 m
NORM EN16899/EN1176

High rubber cylinders

P-M5



S MP, MM, I, C
+ 0,4 x 0,4 x 0,4 m
NORM EN16899/EN1176

Low rubber cylinders

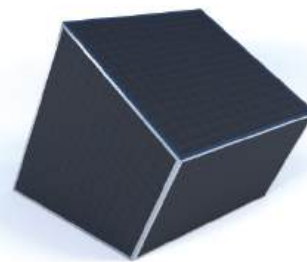
P-M6



S MP, MM, I, C
+ 0,4 x 0,4 x 0,2 m
NORM EN16899/EN1176

Single wall "X"

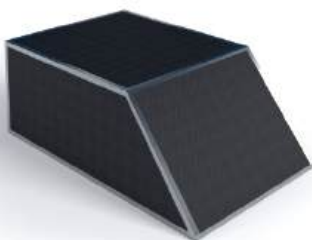
P-M7



S MP, MM, I, C
+ 2,4 x 2,1 x 2,26 m
NORM EN16899/EN1176

Single wall "Y"

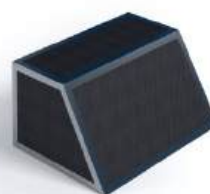
P-M8



S MP, MM, I, C
+ 1,56-2,2 x 1,3 x 0,8 m
NORM EN16899/EN1176

Single wall "Z"

P-M9



S MP, MM, I, C
+ 0,4-0,7 x 0,5 x 1,0 m
NORM EN16899/EN1176

OUR NEW STANDARD

EVERYWHERE YOU NEED AESTHETICS
INSPIRED BY NATURE



Walls made of galvanized steel profiles finished with wood combine the structural strength and durability of steel with the aesthetic appeal and warmth of wood.

Concrete and galvanized steel obstacles

Prefabricated, ready-to-dig obstacles are made of reinforced concrete C25 / 30 or built by us from scratch at the investment place. The walls have a special, non-slip "OSB board" texture, which is the standard of this type of solutions for the needs of the parkour. The advantage of this type of obstacles is their water resistance and durability for years.



Plywood or HPL material walls

A lightweight solution that allows easy modification and installation. It is perfect where there is no possibility of heavy equipment entering. Ready to lay foundations, prefabricated walls are relatively cheap to transport. By using the right choice of colors, we can create interesting visual solutions.

Low obstacles

Low obstacles from the proprietary, specially developed for the needs of parkour spaces, EPDM compound is a flexible solution with wide possibilities of individualisation in terms of size, shape and color. They perfectly diversify any investment.



Hot dip galvanized or stainless steel bars

As standard, the bars are protected against corrosion with hot-dip galvanization, which eliminates the problem of paint peeling when used frequently. Where necessary due to a warm and humid climate, we use stainless steel.



FEEL THE WAVE OF THE TREND

SKY RINGS PARKS

Nowadays, planning public space more and more often requires us to look for innovative solutions. Creating places that will be attractive and unique at the same time. Spaces that build local communities. What combines all these features is Sky Rings.

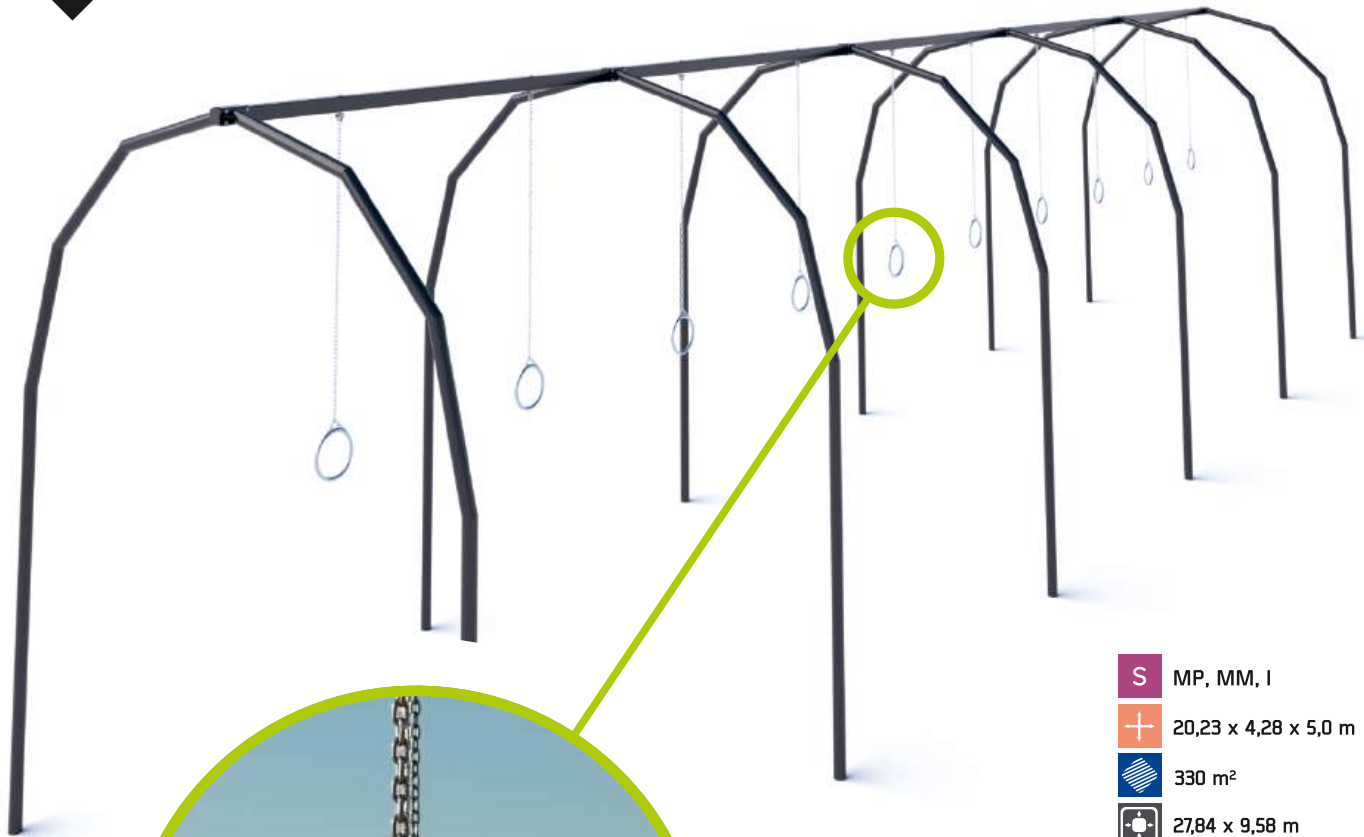
Sky Rings is a set of several to even dozen pairs of gymnastic rings suspended on a steel structure that resembles a large swing for children. The whole thing is configured in such a way that it allows users to move between the wheels using a combination of arm pulls, leg swings and spins. The uniqueness of the gymnastic ring track is due to its instability and mobility. Because the rings hang independently and swing from a long chain, they can move in any direction. This instability encourages our neuromuscular system to

develop new areas that provide joint stability, overall balance and develop better body coordination. Using the rings in this way requires an integration of coordination, balance and strength that is almost impossible to achieve on other training equipment.

- **great fun, both alone and as a duo**
- **perfectly builds and strengthens the upper body parts**
- **encourages our neuromuscular system to develop new areas**
- **develops joint stability, overall balance and better body coordination**
- **can be a passionate challenge for many months**

Sky Rings

1M- SW-SR



- S MP, MM, I
- + 20,23 x 4,28 x 5,0 m
- ▨ 330 m²
- ⊞ 27,84 x 9,58 m
- HIC 3,70 m
- NORM EN 16630





STREET WORKOUT & NINJA COURSES

Street workout equipment is a response to the growing need for places for outdoor physical activity. Public and free, they are especially popular among young people, but can be used by people of all ages.

Thanks to their specific design, they ensure comprehensive physical development without restricting the freedom of movement. Modular street workout solutions allow for optimal equipment, adapted to the environmental conditions and users' needs.

Therefore, we encourage people to be more active and use calisthenics equipment.

- **More than ready-made sets, we adapt each project to individual needs**
- **Ergonomic solutions based on the experiences of athletes and users**
- **Expandable without the need for mechanical intervention, lower maintenance costs after the warranty expires**
- **Multifunctional activity zones for children, teenagers, adults and seniors**
- **The safety of the youngest is confirmed by compliance with the standard for playgrounds**
- **The bars without the problem of flaking paint are an aesthetic look for years**

Performance standard: (P), (I), (MM)

- **(MP)** - Powder-coated, zinc primer posts, hot-dip galvanized (without painting) bars and exercises elements, non-slip waterproof plywood/HPL, SBR/EPDM cylinders
- **(I)** - Inox stainless steel structure, non-slip and waterproof plywood/ HPL plates, SBR/HDPM cylinders
- **(MM)** - posts made of premium steel painted with hammer paint

Tarzan Street Workout Set

1M-SW07



- S P, I, MM
- + 11,08 x 6,02 x 3,44 m
- ▨ 123,94 m²
- ⊞ 9,62 x 14,58 m
- HIC 2,4 m
- NORM EN1176 / EN16630
- USERS 1 - 13

Start Plus Street Workout Set

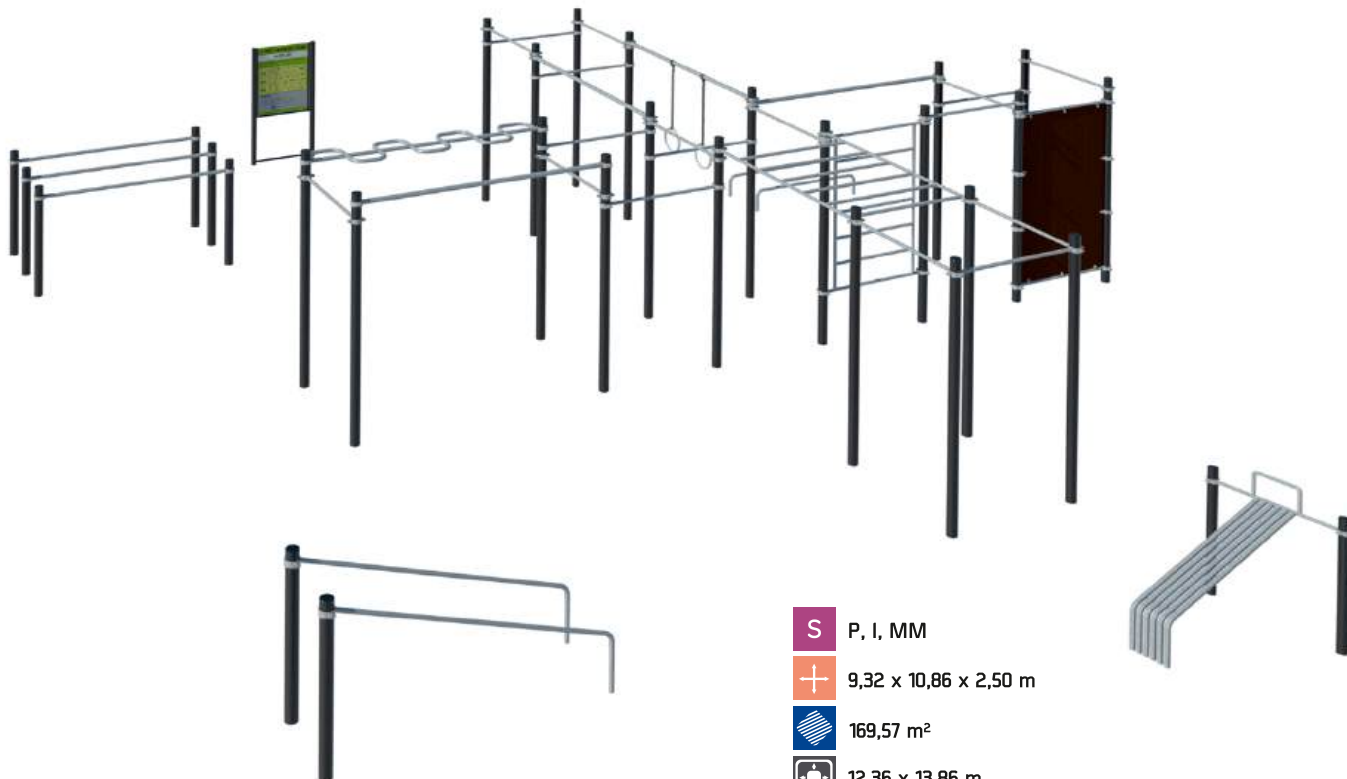
1M-SW04



- S P, I, MM
- + 3,16 x 6,51 x 2,50 m
- ▨ 57,33 m²
- ⊞ 6,76 x 10,11 m
- HIC 2,4 m
- NORM EN1176 / EN16630
- USERS 1 - 8

Individual Street Workout Set

1M-SW09



- S P, I, MM
- + 9,32 x 10,86 x 2,50 m
- ▨ 169,57 m²
- ⊕ 12,36 x 13,86 m
- HIC 2,40 m
- NORM EN1176 / EN16630
- USERS 1 - 13

Monkey 1 Street Workout Set

1M-SW05



- S P, I, MM
- + 4,96 x 3,51 x 3,44 m
- ▨ 66,96 m²
- ⊕ 9,16 x 7,77 m
- HIC 2,40 m
- NORM EN1176 / EN16630
- USERS 1 - 10

STREET WORKOUT SETS

Slim Street Workout Set

1M-SW08



- S P, I, MM
- + 3,77 x 17,78 x 3,44 m
- ▨ 138,27 m²
- ⊕ 7,37 x 21,38 m
- HIC 2,40 m
- NORM EN1176 / EN16630
- USERS 1 - 13

Street Workout Tower

1M-SW01

- S P, I, MM
- + 1,36 x 1,36 x 2,50 m
- ▨ 27,13 m²
- ⊕ 5,56 x 5,56 m
- HIC 2,40 m
- NORM EN1176 / EN16630
- USERS 1 - 2



Street Workout Mini

1M-SW02



- S P, I, MM
- + 1,36 x 2,85 x 2,50 m
- ▨ 30,55 m²
- ⊕ 5,56 x 6,45 m
- HIC 2,40 m
- NORM EN1176 / EN16630
- USERS 1 - 4

Monkey 2 Street Workout Set

1M-SW06



- S** P, I, MM
- +** 5,11 x 4,31 x 3,44 m
- ▨** 69,41 m²
- ⊕** 9,31 x 8,41 m
- HIC** 2,40 m
- NORM** EN1176 / EN16630
- USERS** 1 - 9

Start Street Workout Set

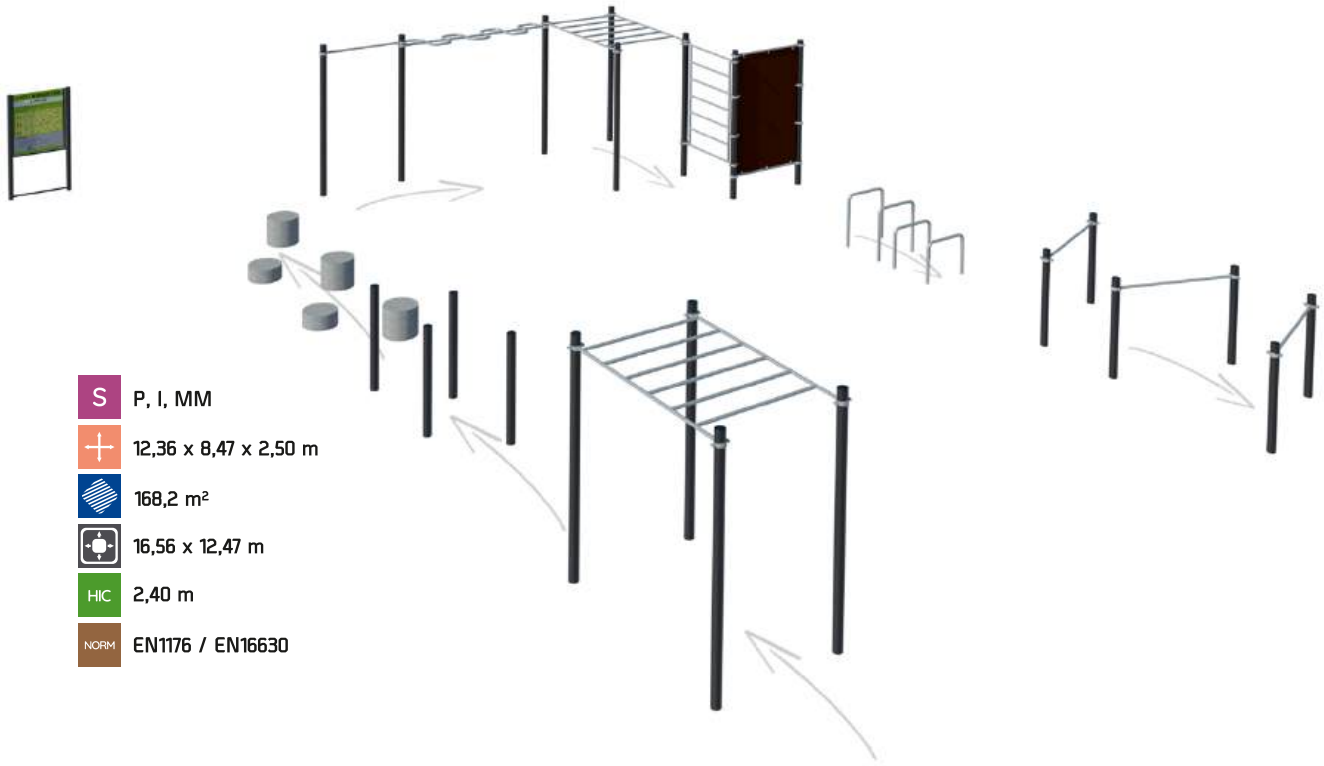
1M-SW03



- S** P, I, MM
- +** 3,16 x 6,51 x 2,50 m
- ▨** 57,33 m²
- ⊕** 6,76 x 10,11 m
- HIC** 2,40 m
- NORM** EN1176 / EN16630
- USERS** 1 - 7

Smart Ninja Course

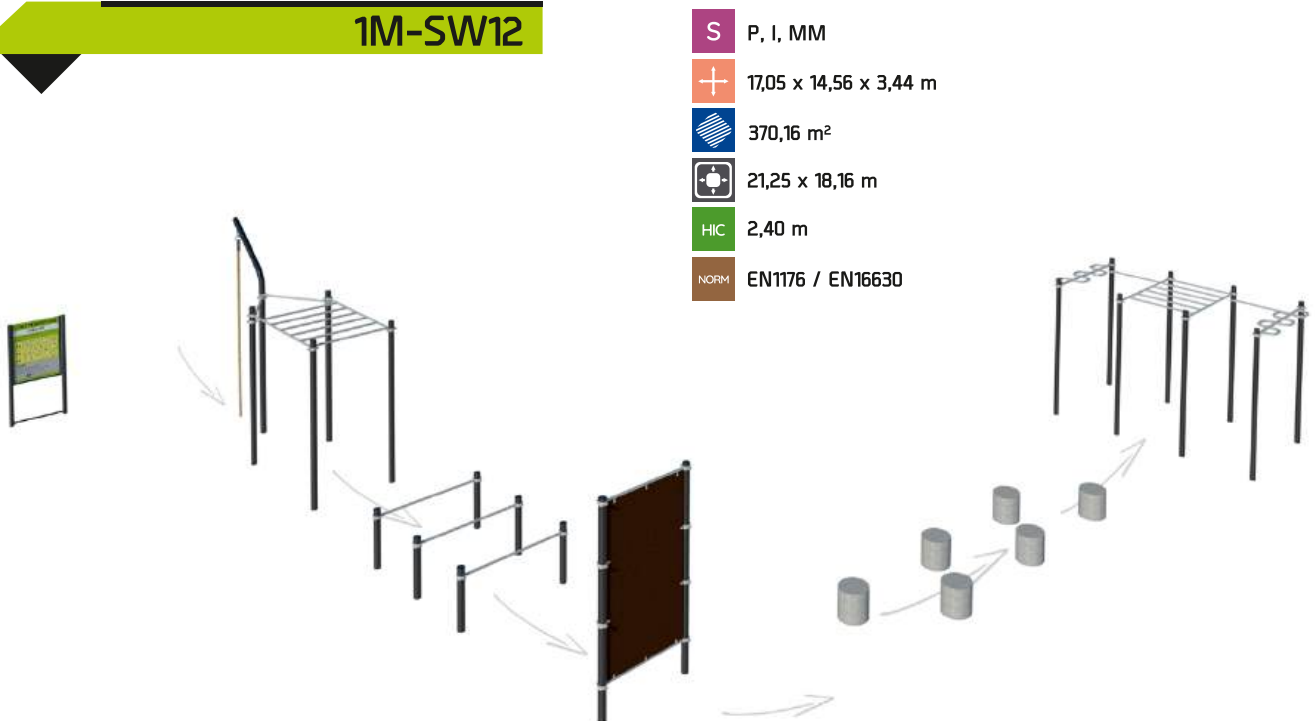
1M-SW11



- S P, I, MM
- + 12,36 x 8,47 x 2,50 m
- ▨ 168,2 m²
- ⊕ 16,56 x 12,47 m
- HIC 2,40 m
- NORM EN1176 / EN16630

Cadet Ninja Course Set

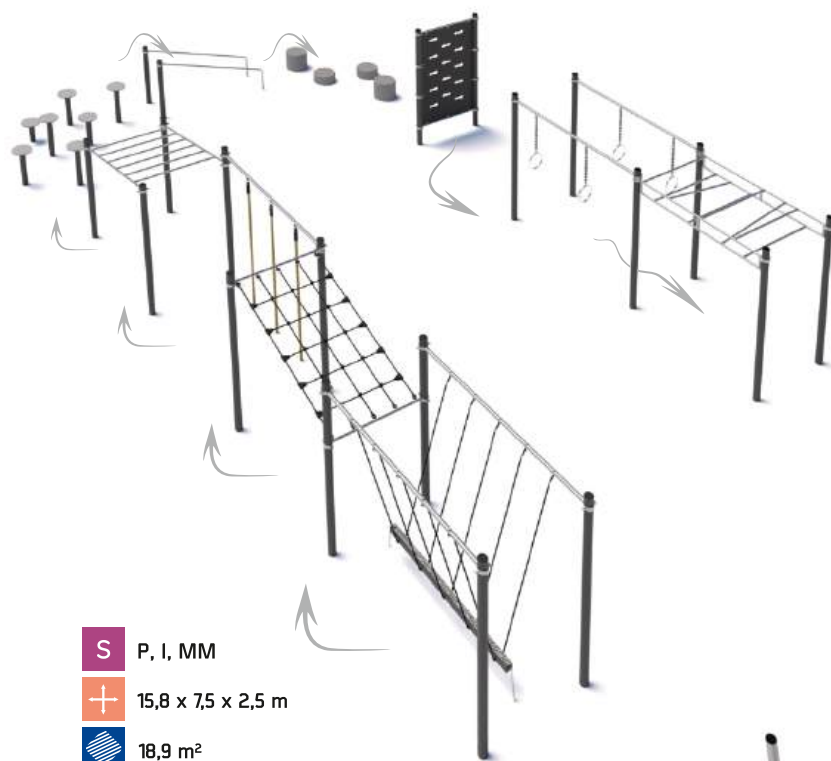
1M-SW12









- S P, I, MM
- + 17,05 x 14,56 x 3,44 m
- ▨ 370,16 m²
- ⊕ 21,25 x 18,16 m
- HIC 2,40 m
- NORM EN1176 / EN16630

Motion Ninja Course

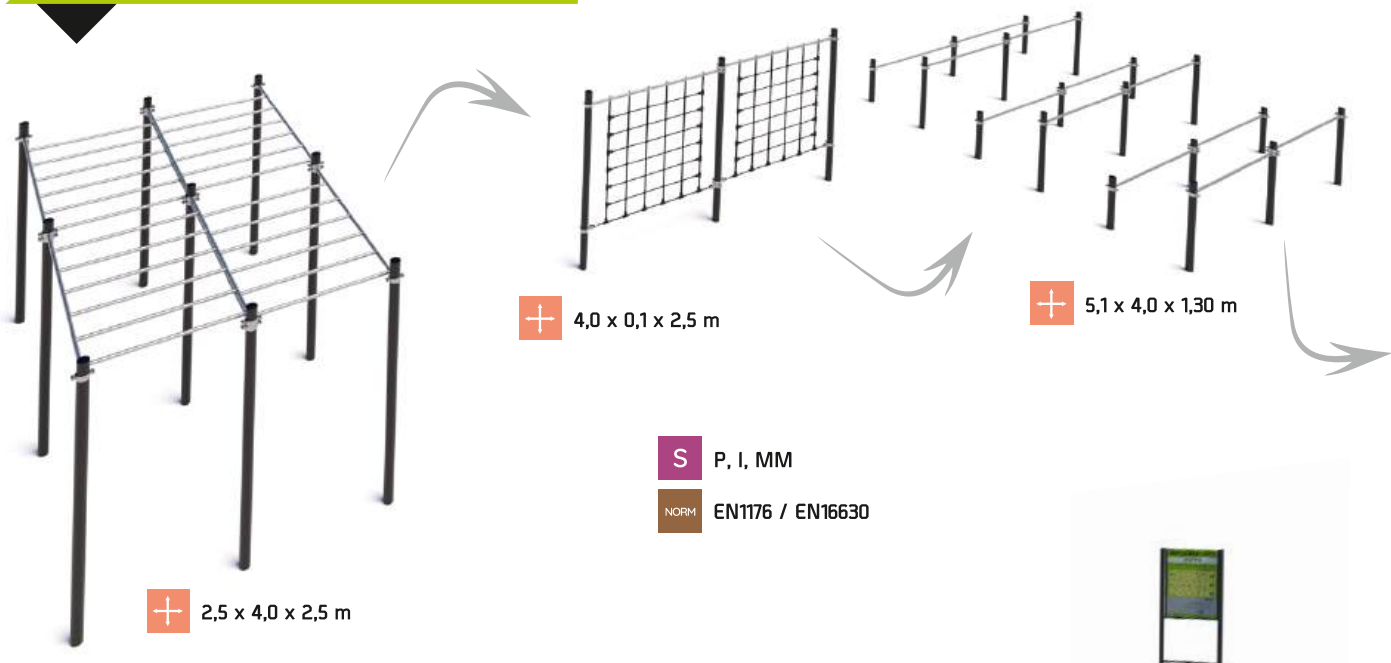
1M-SW013



-  P, I, MM
-  15,8 x 7,5 x 2,5 m
-  18,9 m²
-  19,0 x 12,0 m
-  2,4 m
-  EN1176 / EN16630

Module NC-1

1M-NC1



Module NC-2

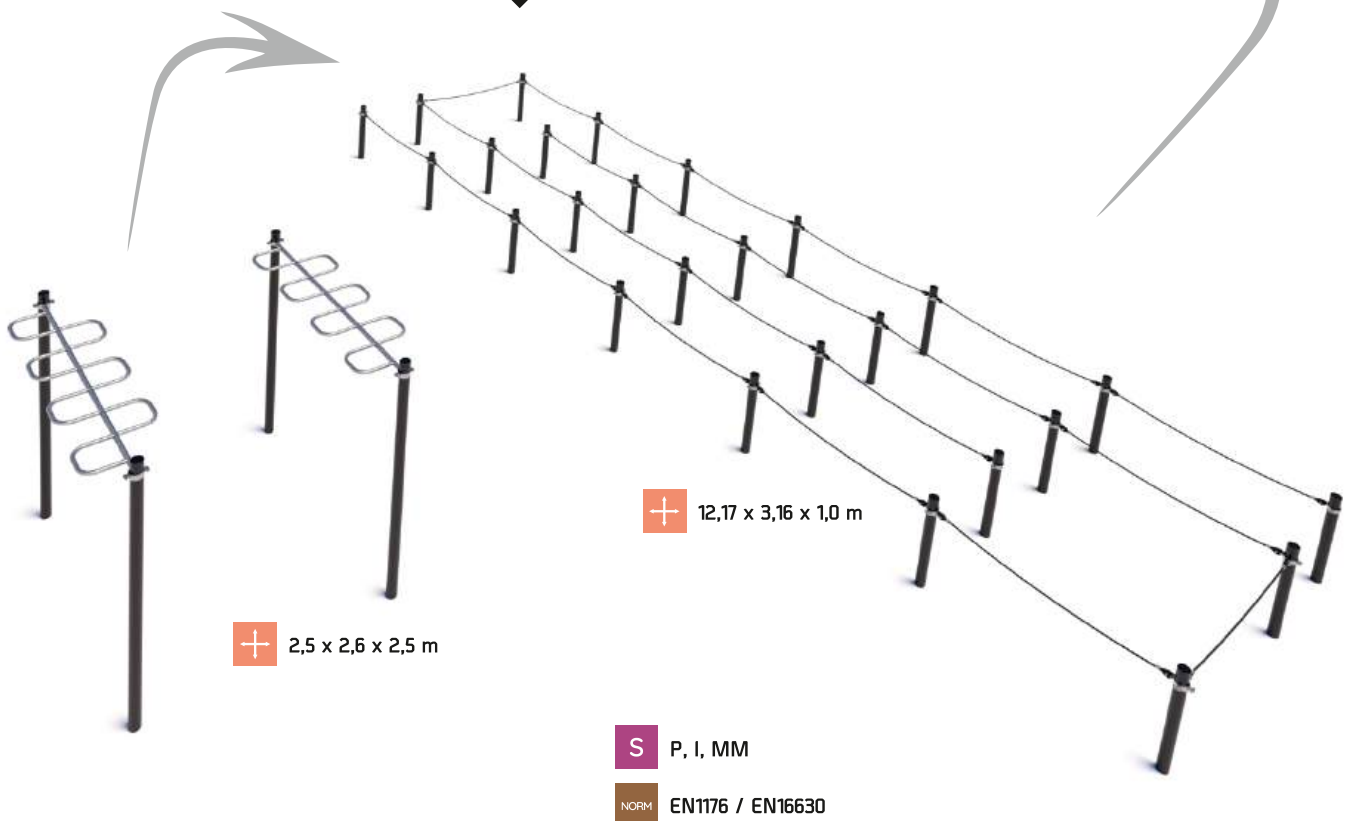
1M-NC2

- S P, I, MM
- + 4,0 x 2,5 x 2,5 m
- NORM EN1176 / EN16630



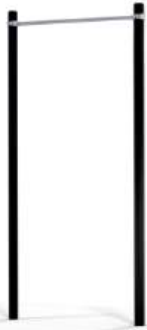
Module NC-3

1M-NC3



High Bars

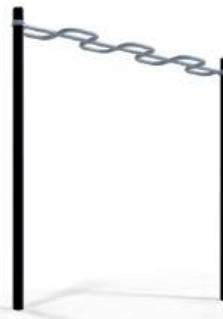
1M- 1.03



S	P, I, MM
+	1,2 x 0,1 x 2,5 m
▨	15,8 m ²
⊕	4,58 x 3,88 m
HIC	2,4 m
NORM	EN1176 / EN16630
USERS	1

Viper Bar

1M-1.14



S	P, I, MM
+	2,0 x 0,1 x 2,5 m
▨	29,0 m ²
⊕	4,8 x 6,7 m
HIC	2,4 m
NORM	EN1176 / EN16630
USERS	1

Wall

1M - 1.13



S	P, I, MM
+	1,3 x 0,1 x 2,5 m
▨	24 m ²
⊕	4,3 x 5,5 m
HIC	2,4 m
NORM	EN1176 / EN16630
USERS	1

Tower

1M-1.01



S	P, I, MM
+	1,2 x 1,2 x 2,5 m
▨	28 m ²
⊕	5,5 x 5,5 m
HIC	2,4 m
NORM	EN1176 / EN16630
USERS	1

Vertical ladder

1M-1.07



S	P, I, MM
+	1,3 x 0,1 x 2,5 m
▨	24 m ²
⊕	4,5 x 5,5 m
HIC	2,4 m
NORM	EN1176 / EN16630
USERS	1

Horizontal Ladder

1M-1.06

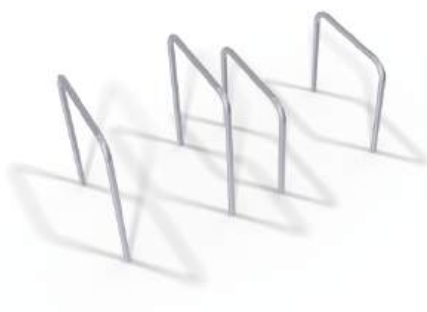


S	P, I, MM
+	1,3 x 2,09 x 2,5 m
▨	32 m ²
⊕	6,3 x 5,5 m
HIC	2,4 m
NORM	EN1176 / EN16630
USERS	1

SINGLE STATIONS

Low Handlebars

1M-1.02



S	P, I, MM
+	1,5 x 0,6 x 0,8 m
▨	16 m ²
⊕	3,6 x 4,5 m
HIC	0,6 m
NORM	EN1176 / EN16630
USERS	1 - 2

Low Straight Parallel Bars

1M-1.41



S	P, I, MM
+	2,4 x 0,64 x 0,3 m
▨	16,4 m ²
⊕	3,64 x 5,04 m
HIC	0,30 m
NORM	EN1176 / EN16630
USERS	1

Inclined Handlebars

1M-1.12



S	P, I, MM
+	2,06 x 0,7 x 1,6 m
▨	17 m ²
⊕	3,7 x 5,06 m
HIC	1,1 m
NORM	EN1176 / EN16630
USERS	1

Straight Parallel Bars

1M-1.05



S	P, I, MM
+	1,5 x 0,60 x 1,3 m
▨	17,00 m ²
⊕	3,78 x 4,60 m
HIC	1,2 m
NORM	EN1176 / EN16630
USERS	1

Triple Low Bars

1M-1.04



S	P, I, MM
+	2,38 x 1,13 x 1,30 m
▨	20,43 m ²
⊕	5,38 x 4,13 m
HIC	0,64 m
NORM	EN1176 / EN16630
USERS	1 - 3

Inclined Bench

1M-1.11



S	P, I, MM
+	2,38 x 1,13 x 1,30 m
▨	20,43 m ²
⊕	5,38 x 4,13 m
HIC	0,64 m
NORM	EN1176 / EN16630
USERS	1



SINGLE STATIONS

Pole Dance

1M - 1.19



S	P, l, MM
+	3,7 x 2,4 x 2,4 m
▨	24,49 m ²
⊕	5,76 x 6,57 m
HIC	3,25 m
NORM	EN1176 / EN16630
USERS	1 - 2

Climbing Rope

1M-1.09



S	P, l, MM
+	2,29 x 2,51 x 3,34 m
▨	21,70 m ²
⊕	5,76 x 5,51 m
HIC	2,20 m
NORM	EN1176 / EN16630
USERS	1 - 2

Battle Rope

1M-1.25



S	P, l, MM
+	6,0 x 0,5 x 1,30 m
▨	29,6 m ²
⊕	9,0 x 3,5 m
HIC	0,0 m
NORM	EN1176 / EN16630
USERS	1

Gymnastic Rings

1M-1.08 S



S	P, l, MM
+	4,8 x 1,2 x 3,2 m
▨	28,15 m ²
⊕	6,30 x 3,50 m
HIC	3,20 m
NORM	EN1176 / EN16630
USERS	1 - 3



PLAYGROUND TRAMPOLINES

Nowadays, if we want to create an inviting public space that will meet the needs of residents, we must use modern and unusual solutions. If you are looking for play equipment that will increase the attractiveness of your investment, an in-ground trampoline is a good choice.

Outdoor trampolines are not only an excellent element of the playground, they are well suited to parks, schools and sports facilities. Single equipment can be used to create larger sets or trampoline parks. Our products are characterized by high durability and are manufactured so that they can be used all year round.

The rapid development of civilization is associated with unfavorable, especially for children, such phenomena as obesity or a sedentary lifestyle. Trampolines help to solve this problem by enabling physical exercise through play. Contrary to popular opinion, this product is not just for children. Make sure that the inhabitants of your town or housing estate can provide their children and themselves a lot of fun!

OUR SOLUTIONS:

- The shock-absorbing surface- It is made of a proprietary blend of EPDM - many times more durable than SBR. The uniform material is directly poured on the mat structure, which ensures its better adhesion than in the case of spot gluing of the finished panels;
- Structural elements of the mat are made of stainless steel, ensuring their resistance to corrosion;
- Springs - Designed and manufactured especially for our trampolines. Their durability is confirmed not only by tests, but also many years of trouble-free use;
- Stainelss steel springs - an additional option for locations in corrosive environments;
- Dedicated packaging - If necessary, our equipments are packed in boxes suitable for sea or road transport in accordance with the requirements of overseas transport;
- Spare parts - permanent stock of most spare parts, shipped within two days of ordering.

SPECIAL MARKING:



- Jumping area




THEMED PLAYGROUND TRAMPOLINES

Dolphin

1M-T-DE

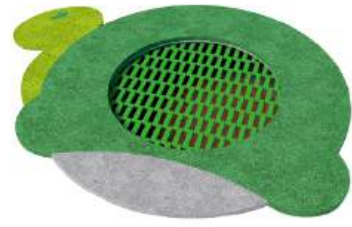


 Ø 0,84 m
 Ø 1,49 m
 11,60 m²




 Ø 3,84 m
 HIC 0,90 m
 NORM EN 1176

Turtle

1M-T-TU






 Ø 0,84 m
 Ø 1,49 m
 11,60 m²




 Ø 3,84 m
 HIC 0,90 m
 NORM EN 1176

Dog

1M-T-DO






 Ø 0,84 m
 Ø 1,49 m
 11,60 m²




 Ø 3,84 m
 HIC 0,90 m
 NORM EN 1176

Panda

1M-T-PA





 Ø 0,84 m
 Ø 1,49 m
 11,60 m²




 Ø 3,84 m
 HIC 0,90 m
 NORM EN 1176

Frog

1M-T-FR

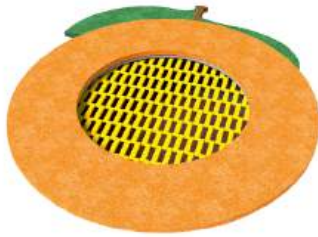
 Ø 0,84 m
 Ø 1,49 m
 11,60 m²



 Ø 3,84 m
 HIC 0,90 m
 NORM EN 1176

Tangerine

1M-T- TA



✕ Ø 0,84 m
+ Ø 1,49 m
▨ 11,60 m²

⊕ Ø 3,84 m
HIC 0,90 m
NORM EN 1176

Apple

1M-T- AP



✕ Ø 0,84 m
+ Ø 1,49 m
▨ 11,60 m²

⊕ Ø 3,84 m
HIC 0,90 m
NORM EN 1176

Pear

1M-T- PE



✕ Ø 0,84 m
+ Ø 1,49 m
▨ 11,60 m²

⊕ Ø 3,84 m
HIC 0,90 m
NORM EN 1176

Lemon

1M-T- LE









✕ Ø 0,84 m
+ Ø 1,49 m
▨ 11,60 m²

⊕ Ø 3,84 m
HIC 0,90 m
NORM EN 1176

JUMP
IN TO
THE
FAIRYTALE

Mini Trampoline

1M-T80S

 0,84 x 0,84 m	 3,85 x 3,85 m
 13,5 x 1,35 x 0,35 m	 0,90 m
 12,90 m ²	 EN 1176



Choose small trampolines. They are cheaper and safer because they only fit one child



EPDM surface ensure fall safety during jumping









Increased corrosion resistance - stainless steel ropes and fittings

Mini Trampoline

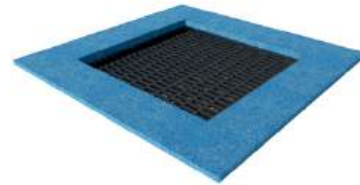
1M-T80S









 0,84 x 0,84 m	 3,85 x 3,85 m
 13,5 x 1,35 x 0,35 m	 0,90 m
 12,90 m ²	 EN 1176

Small Trampoline

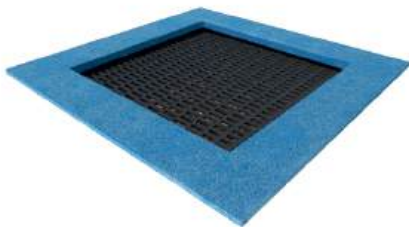
1M-T100S









 1,04 x 1,04 m	 4,04 x 4,04 m
 1,55x1,55x0,45 m	 0,90 m
 14,40 m ²	 EN 1176

Medium Trampoline

1M-T125S

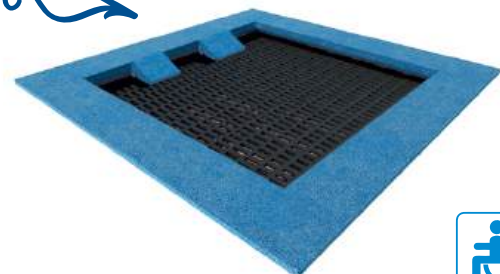








 1,29 x 1,29 m	 5,29x5,29 m
 1,80x1,80x0,45 m	 0,90 m
 23,10 m ²	 EN 1176

Inclusive Trampoline

1M-T150SI

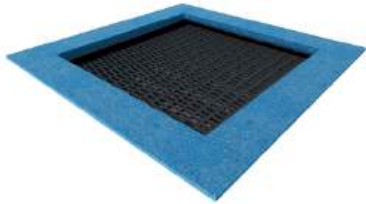
Ramp for wheelchair









 1,54 x 1,54 m	 5,54 x 5,54 m
 2,05 x 2,05 x 0,45 m	 0,90 m
 27,30 m ²	 EN 1176

Big Trampoline

1M-T150S









 1,54 x 1,54 m	 5,54 x 5,54 m
 2,05 x 2,05 x 0,45 m	 HIC 0,90 m
 27,30 m ²	 NORM EN 1176

Huge Trampoline

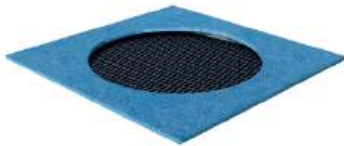
1M-T200S









 2,04 x 2,04 m	 6,04 x 6,04 m
 2,55 x 2,55 x 0,45 m	 HIC 0,90 m
 33,20 m ²	 NORM EN 1176

Square Crater Trampoline

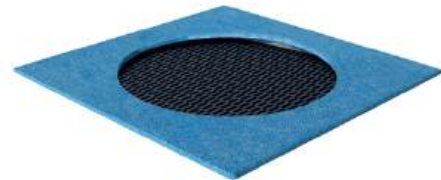
1M-T100RS









 Ø 1,00 m	 Ø 4,01 m
 1,55 x 1,55 x 0,45 m	 HIC 0,90 m
 12,60 m ²	 NORM EN 1176

Big Square Crater Trampoline

1M-T150RS



 Ø 1,50 m	 Ø 5,56 m
 2,18 x 2,18 x 0,45 m	 HIC 0,90 m
 27,30 m ²	 NORM EN 1176



Long use ensures extremely durable matstroke and thick springs








Lifetime warranty for goodhaving fun and jumping!

Small Square Crater Trampoline

1M-T80RS



 Ø 0,84 m	 Ø 3,80 m
 1,35 x 1,35 x 0,45 m	 HIC 0,90 m
 11,30 m ²	 NORM EN 1176

Corner Trampoline

1M-T1/4R





 Ø 0,98 m	 9,53 x 5,60 m
 6,44x2,60x3,50 m	 HIC 0,00 m
 37,84 m ²	 NORM EN 1176






Small Crater Trampoline

1M-T80R






-  Ø 0,84 m
-  Ø 1,49 m
-  11,60 m²




-  Ø 3,84 m
-  HIC 0,90 m
-  NORM EN 1176

Crater Trampoline

1M-T100R



-  Ø 1,04 m
-  Ø 1,71 m
-  12,80 m²




-  Ø 4,04 m
-  HIC 0,90 m
-  NORM EN 1176




Teenagers and adults are also like to jump

Big Crater Trampoline

1M-T150R




-  Ø 1,57 m
-  Ø 2,28 m
-  24,30 m²




-  Ø 5,57 m
-  HIC 0,90 m
-  NORM EN 1176

Hexagonal

1M-T100H

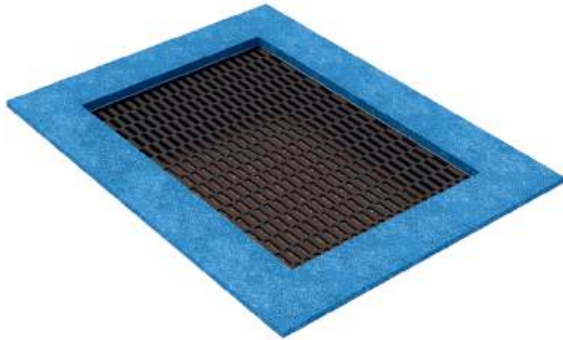








-  1,90 x 0,94 m
-  Ø 4,09 m
-  14,40 m²

-  16,80 x 14,50 m
-  HIC 0,90 m
-  NORM EN 1176

Rectangle Mini Trampoline

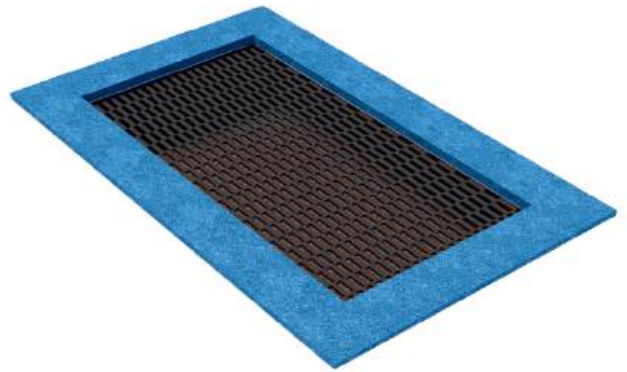
1M-T100x150









 1,04 x 1,54 m	 5,54 x 5,05 m
 1,55 x 2,05 x 0,45 m	 HIC 0,90 m
 24,50 m ²	 NORM EN 1176

Rectangle Small Trampoline

1M-T100x200









 1,04 x 2,04 m	 6,05 x 5,05 m
 1,55 x 2,55 x 0,45 m	 HIC 0,90 m
 27,00 m ²	 NORM EN 1176









Rectangle Medium Trampoline

1M-T100x300

 1,04 X 3,04 m	 7,04 x 5,05 m
 1,55 x 3,55 x 0,45 m	 HIC 0,90 m
 32,10 m ²	 NORM EN 1176

Rectangle Long Trampoline

1M-T100x400

 4,0 x 1,04 m	 8,01 x 5,04 m
 4,52 x 1,55 x 0,45 m	 HIC 0,90 m
 36,90 m ²	 NORM EN 1176



PLAYGROUND TRAMPOLINE SETS

Set "Flea"

1M-Set 4



3,92 m ²	Ø 5,60 m
3,10 x 3,10 m	HIC 0,90 m
27,14 m ²	NORM EN 1176

Set "Big Flea"

1M-Set 8



I like to jumping around

8,28 m ²	7,17 x 7,17 m
4,60 x 4,60 m	HIC 0,90 m
46,95 m ²	NORM EN 1176

Set "Gerbil"

1M-Set 5



3,92 m ²	5,60 x 5,60 m
3,10 x 3,10 m	HIC 0,90 m
29,34 m ²	NORM EN 1176

Set "Loop"

1M-Set 15



15,70 m ²	10,27 x 10,27 m
7,76 x 7,76 m	HIC 0,90 m
79,60 m ²	NORM EN 1176

Set "Craters"

1M-Set 6R



3,30 m ²	6,88 x 7,48 m
4,52 x 4,66 m	HIC 0,90 m
40,23 m ²	NORM EN 1176

Set "Lemur"

1M-Set10



*Jehuu!!!
I'm a Lemur :)*

6,10 m ²	5,62 x 7,17 m
3,10 x 4,66 m	HIC 0,90 m
35,82 m ²	NORM EN 1176

Set "Grasshopper"

1M-Set5R



2,75 m ²	7,58 x 5,72 m
5,25 x 8,37 m	HIC 0,90 m
34,83 m ²	NORM EN 1176

Set "Cat"

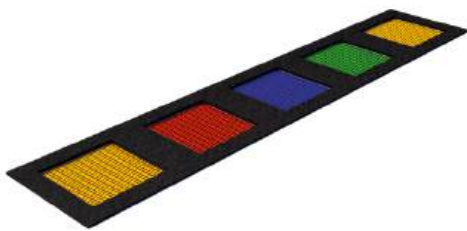
1M-Set 11



6,97 m ²	7,17 x 7,17 m
4,66 x 4,66 m	HIC 0,90 m
40,12 m ²	NORM EN 1176

Set "Squirrel"

1M-Set 12



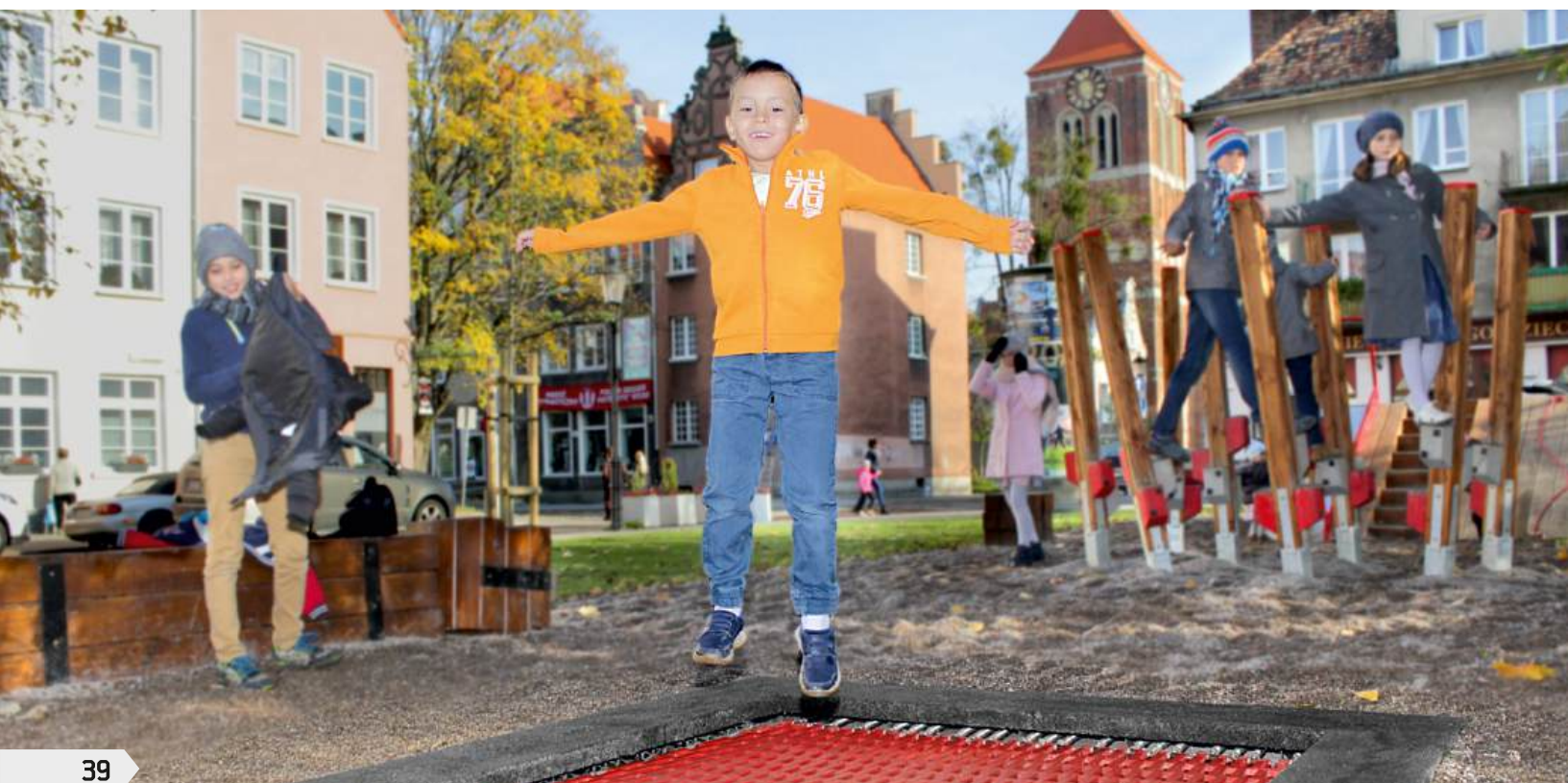
5,45 m ²	10,25 x 4,04 m
7,76 x 1,55 m	HIC 0,90 m
39,52 m ²	NORM EN 1176

Set "Orangutan"

1M-Set 14



19,11 m ²	7,15 x 10,12 m
4,66 x 7,62 m	HIC 0,90 m
70,40 m ²	NORM EN 1176



EPDM RUBBER COLOURS

MONOLITH:



Sky Blue



Rose



Violet



Blue Grey



Black



Red



Orange



Light Gray



Green



Yellow

MULTI COLOUR:



MIX2
COMPOSITION:
Green, Yellow, Blue



MIX6
COMPOSITION:
Black, Blue



MIX1
COMPOSITION:
Yellow, Black



MIX7
COMPOSITION:
Blue, Yellow



MIX4
COMPOSITION:
Red, Blue



MIX5
COMPOSITION:
Grey, Black, Red

JUMPING MATS COLOURS

YELLOW



RED



GREEN



BLUE



SILVER



BLACK



BROWN



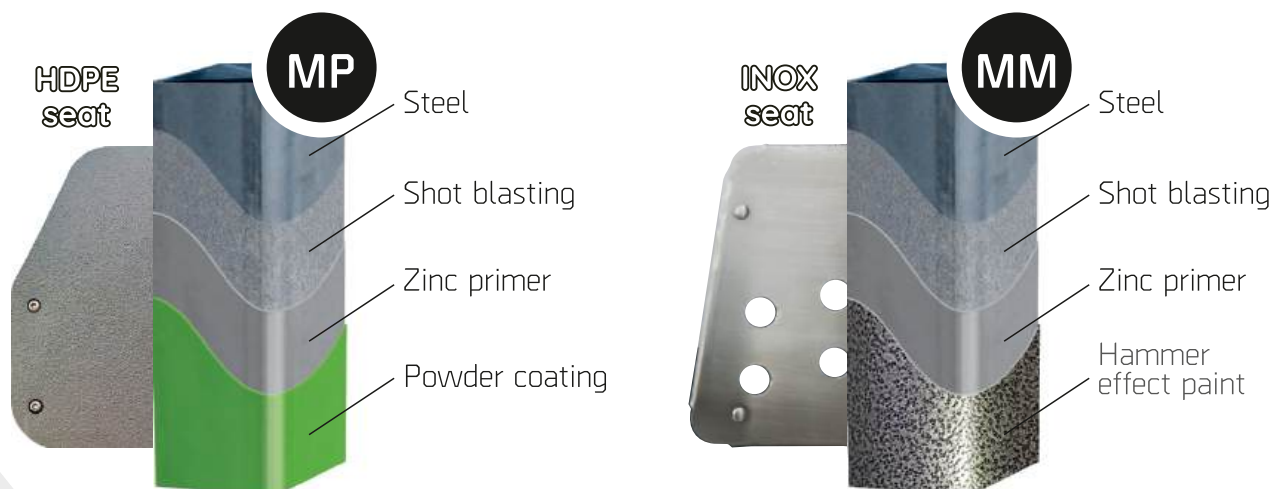


Outdoor gyms - OFC Series

Ask for antique hammer effect paint combined with stainless steel seats and you will see what premium quality gyms look like. Raw colors and a huge, legible instruction perfectly match the modern urban architecture. Freely configure the equipment on both sides of the pylon.

Performance standards: "MP", "MM"







- MP - Powder coating powder-coated steel structure, seats made of HDPE, treads made of aluminum.
- MM - Hammer painting structure made of steel painted with hammer paint, seats and treads made of stainless steel.



OUTDOOR GYMS ON PYLONS - OFC SERIES

Air Walker + Crosstrainer

OFC-02 + OFC-01 + OFC-05

 MP, MM	 6,56 x 4,32 m
 3,56 x 1,32 x 1,77 m	 0,38 m
 26,43 m ²	 EN 16630:2015



Pylon

OFC-01









 MP, MM	 0,54 x 0,09 x 1,77 m
 0,00 m ²	 0,00 x 0,00 m
 0,00 m	 EN 16630:2015

Air Walker

OFC-02



 MP, MM	 0,55 x 1,32 x 1,52 m
 13,40 m ²	 3,55 x 4,32 m
 0,34 m	 EN 16630:2015

Crosstrainer

OFC-05



 MP, MM	 1,35 x 0,63 x 1,58 m
 13,84 m ²	 4,35 x 3,63 m
 0,38 m	 EN 16630:2015

Ladders

OFC-03 + OFC-01 + OFC-03



 MP, MM	 1,49 x 3,87 x 1,92 m
 15,44 m ²	 4,49 x 3,87 m
 0,92 m	 EN 16630:2015

Single Ladder

OFC-03 + OFC-01









 MP, MM	 0,79 x 0,87 x 1,92 m
 12,74 m ²	 3,79 x 3,87 m
 0,92 m	 EN 16630:2015

Ladder + Legs Raise

OFC-03 + OFC-01 + OFC-06



 MP, MM	 1,54 x 0,87 x 1,92 m
 15,65 m ²	 4,54 x 3,87 m
 0,92 m	 EN 16630:2015

Double Bench

OFC-04 + OFC-01 + OFC-04



S	MP, MM
+	0,97 x 1,79 x 1,77 m
▨	17,04 m ²
⊕	3,97 x 4,79 m
HIC	0,50 m
NORM	EN 16630:2015

Single Bench

OFC-04 + OFC-01



S	MP, MM
+	0,53 x 1,57 x 1,77 m
▨	14,24 m ²
⊕	3,53 x 4,57 m
HIC	0,50 m
NORM	EN 16630:2015

Bench + Back Trainer

OFC-04 + OFC-01 + OFC-08



S	MP, MM
+	1,22 x 1,57 x 1,77 m
▨	17,42 m ²
⊕	4,22 x 4,57 m
HIC	0,50 m
NORM	EN 16630:2015

Double Back Trainer

OFC-08 + OFC-01 + OFC-08



S	MP, MM
+	1,53 x 0,82 x 1,77 m
▨	15,36 m ²
⊕	4,53 x 3,82 m
HIC	0,26 m
NORM	EN 16630:2015

Single Legs Raise

OFC-01 + OFC-06



S	MP, MM
+	0,84 x 0,55 x 1,77 m
▨	14,39 m ²
⊕	3,84 x 3,55 m
HIC	0,29 m
NORM	EN 16630:2015

Double Legs Raise

OFC-06 + OFC-01 + OFC-06



S	MP, MM
+	1,60 x 0,55 x 1,77 m
▨	11,72 m ²
⊕	4,60 x 3,55 m
HIC	0,29 m
NORM	EN 16630:2015

Choose the standard of workmanship!

Single Legs Press

OFC-07 + OFC-01



S	MP, MM
+	0,95 x 0,59 x 1,77 m
▨	12,29 m ²
⊕	3,95 x 3,59 m
HIC	0,48 m
NORM	EN 16630:2015

Double Legs Press

OFC-07 + OFC-01 + OFC-07



S	MP, MM
+	1,81 x 0,59 x 1,77 m
▨	15,32 m ²
⊕	4,81 x 3,59 m
HIC	0,48 m
NORM	EN 16630:2015

OUTDOOR GYMS ON PYLONS - OFC SERIES

Rower + Legs Press

OFC-11 + OFC-01 + OFC-07



S	MP, MM
+	2,72 x 0,94 x 1,77 m
▨	20,62 m ²
⊕	5,72 x 3,94 m
HIC	0,77 m
NORM	EN 16630:2015

Ski Trainer + Twister

OFC-09+10



S	MP, MM
+	1,30 x 0,89 x 1,47 m
▨	14,81 m ²
⊕	4,30 x 3,89 m
HIC	0,21 m
NORM	EN 16630:2015

Double Twister

OFC-09_1



S	MP, MM
+	1,22 x 0,54 x 1,47 m
▨	12,97 m ²
⊕	4,22 x 0,54 m
HIC	0,11 m
NORM	EN 16630:2015

Single Twister

OFC-09



S	MP, MM
+	0,67 x 0,53 x 1,47 m
▨	11,02 m ²
⊕	3,67 x 3,53 m
HIC	0,11 m
NORM	EN 16630:2015

Single Ski Trainer

OFC-10



S	MP, MM
+	0,80 x 0,89 x 1,35 m
▨	12,86 m ²
⊕	3,80 x 3,89 m
HIC	0,21 m
NORM	EN 16630:2015

Double Ski Trainer

OFC-10_1



S	MP, MM
+	1,40 x 0,89 x 1,35 m
▨	15,18 m ²
⊕	4,40 x 3,89 m
HIC	0,21 m
NORM	EN 16630:2015

Rower

OFC-11



S	MP, MM
+	1,18 x 0,94 x 1,01 m
▨	14,54 m ²
⊕	4,18 x 3,94 m
HIC	0,77 m
NORM	EN 16630:2015

Bicycle

OFC-18



S	MP, MM
+	0,97 x 0,54 x 1,13 m
▨	11,73 m ²
⊕	3,97 x 3,54 m
HIC	0,70 m
NORM	EN 16630:2015

Double Pull Down

OFC-12 + OFC-01 + OFC-12



S	MP, MM
+	1,93 x 0,88 x 1,77 m
▨	17,21 m ²
⊕	4,93 x 3,88 m
HIC	0,44 m
NORM	EN 16630:2015

Single Pull Down

OFC-01 + OFC-12



S	MP, MM
+	1,01 x 0,88 x 1,77 m
▨	13,62 m ²
⊕	4,01 x 3,88 m
HIC	0,44 m
NORM	EN 16630:2015

Pull Down + Chest Press

OFC-12 + OFC-01 + OFC-13



S	MP, MM
+	1,79 x 0,88 x 1,77 m
▨	16,66 m ²
⊕	4,79 x 3,88 m
HIC	0,44 m
NORM	EN 16630:2015

Double Chest Press

OFC-13 + OFC-01 + OFC-13



S	MP, MM
+	1,64 x 0,84 x 1,77 m
▨	15,88 m ²
⊕	3,64 x 3,84
HIC	0,36 m
NORM	EN 16630:2015

Single Chest Press

OFC-13 + OFC-01



S	MP, MM
+	0,86 x 0,84 x 1,77 m
▨	12,91 m ²
⊕	3,86 x 3,84 m
HIC	0,36 m
NORM	EN 16630:2015

Massager

OFC-17



S	MP, MM
+	0,97 x 0,65 x 1,56 m
▨	12,57 m ²
⊕	3,97 x 3,65 m
HIC	0,00 m
NORM	EN 16630:2015

Skier

OFC-19



S	MP, MM
+	1,45 x 0,59 x 1,64 m
▨	15,88 m ²
⊕	4,95 x 3,59 m
HIC	0,24 m
NORM	EN 16630:2015

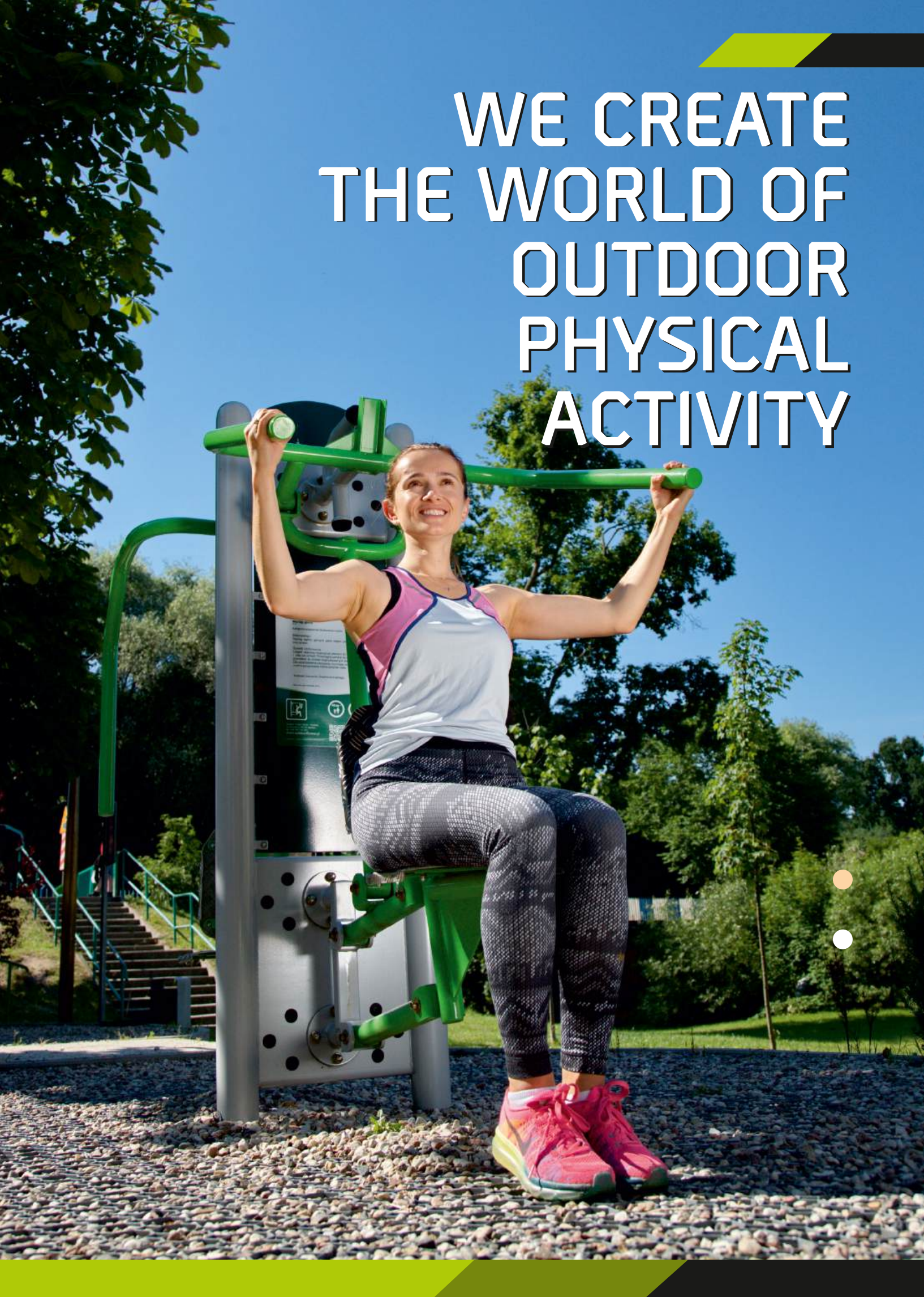
Information Board

OFC-14



S	MP, MM
+	0,51 x 0,06 x 1,78 m
NORM	EN 16630:2015

WE CREATE THE WORLD OF OUTDOOR PHYSICAL ACTIVITY



JUMP ON A HIGH WAVE WITH US

1MOVE

Poland
Gdańsk 80-174,
Morelowa 5/30 St.
web: www.1move.pl
e-mail: 1@1move.pl



CONTACT:

English / Polish:
+48 790 388 558
+48 536 253 752
German / Polish:
+48 733 221 221



Łódzka
Specjalna Strefa
Ekonomiczna



Rzeczpospolita
Polska



Finansowane przez
Unię Europejską